

Acclivity's Activities – May 2021

The disappointing cold wet Spring continues. It was a case of making the most of the odd sunbeam that made it to earth.

I was surprised to see a few Painted Ladies at High and Over on May 10th. This was the first day that an influx of these long-travelled butterflies was seen in the UK. They have come up from southern Europe, or further, on the southerly winds.

They were giving a lot of grief to the local Red Admirals!



More butterflies were found at Butchers Hole Gallops, including a beautiful Small Copper with blue spots on the wing. This is an aberrant known as *ab. caeruleo-punctata*.



This early Common Blue was a welcome sight too

Green Veined White



Dingy Skipper

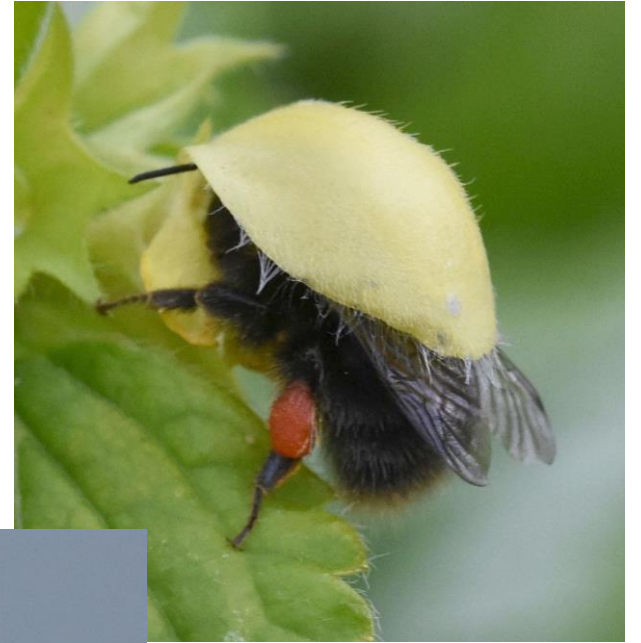


This striking Hoverfly is *Chrysotoxum citrofasciatum*. It's not the commonest of this genus, but is the one I find more often locally

We have 3 Bee Hotels in our garden, which in past years have been occupied by *Osmia bicornis*, the Red Mason Bee. Sadly no sign of the hotels being used this year, but this male was seen at Charlston Farmhouse.



How do you like my hat? A worker Early Bumblebee, *Bombus pratorum*, getting stuck in!



I probably major on insects too much for some people, so here is a Whitethroat seen on Seaford Head.



Two more Spring species from my garden. Holly Blue, and the Buffish Mining Bee



Two Bees found on Blatchington Golf Course. The Hawthorn Mining Bee (above) and the quite scarce Small Flecked Mining Bee



The fascinating world of the mini-beasts! Two tiny weevils. I found these both at Last Wood Meadow, then found the one below in my front garden too, , in a Hawthorn bush.

